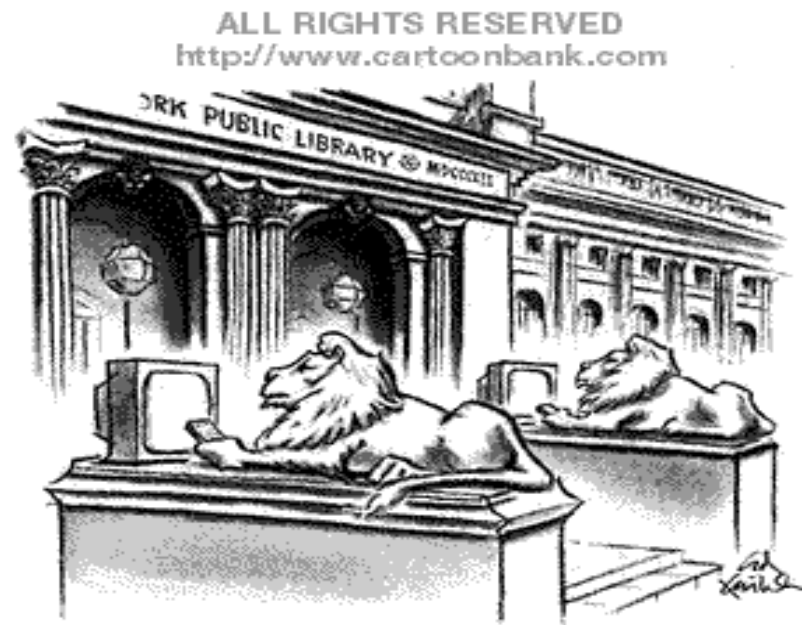


The Not-So-Phantom Tollbooth



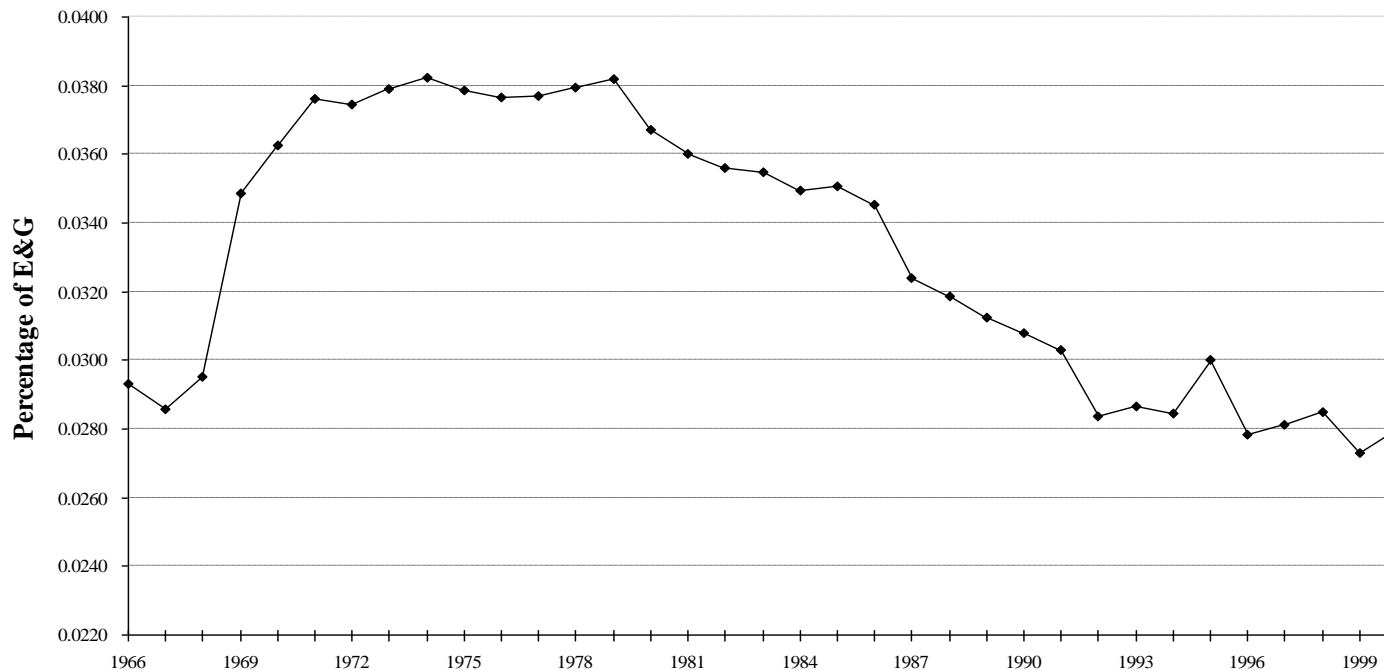
The Modern Library Reader



Ed Fisher, in the *New Yorker*, February 1, 1993

ARL: Library % of University Budgets

Average Percentage of E&G Expenditures for 17 ARL Libraries, 1966-2000

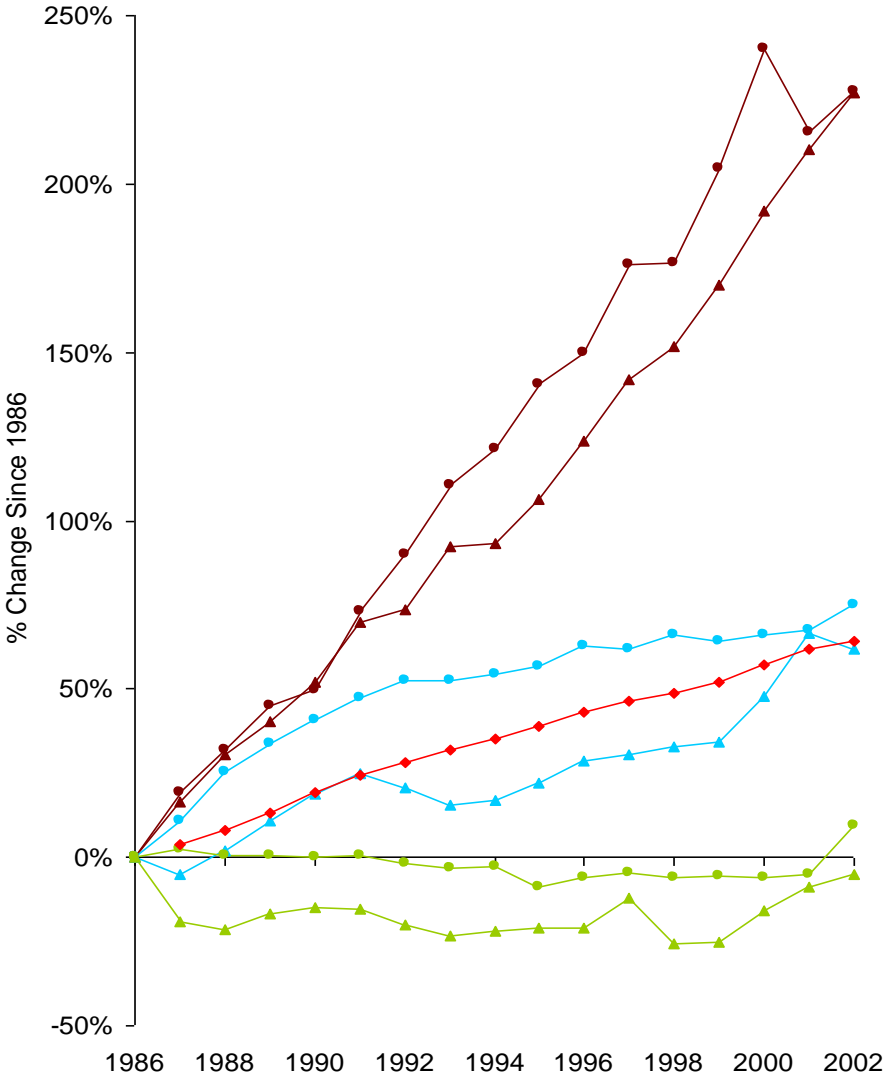


Copyright Association of Research Libraries, 2002

NERL Collections Budget “Round Robin”

- How much has your collections budget increased this year over last?
- 2 libraries 8% (probably one-time)
- 2 libraries 7%+ (probably one-time)
- 4 libraries 5%
- 2 libraries 4%
- 3 libraries flat to 1%
- 5 libraries negative (cuts)

Graph 2
 Monograph and Serial Costs
 in ARL Libraries, 1986-2002



Source: ARL Statistics 2001-02, Association of Research Libraries, Washington, D.C.

ALA: Average Annual Subscription Price Percent Change 1993-2002

- Barbara Albee and Brenda Dingley, “U.S. Periodical Prices – 2002”
- Complete report at:
<www.ala.org/alongline/archive/periodicals02.html>
- Average annual subscription price percent change for each of 10 years is 9.2% UP:

● 1993:	5.5%	1998:	10.3%
● 1994:	9.6%	1999:	10.4%
● 1995:	10.4%	2000:	9.0%
● 1996:	10.8%	2001:	8.3%
● 1997:	9.9%	2002:	9.2%

ALA: Periodicals Price Index Change, 1984-2002

- Barbara Albee and Brenda Dingley, continued
- Change by factor of FIVE:

● 1984:	100.0	1994:	246.3
● 1985:	108.6	1995:	271.9
● 1986:	118.2	1996:	301.3
● 1987:	129.9	1997:	331.1.
● 1988:	141.8	1998:	365.2
● 1980:	155.3	1999:	403.2
● 1990:	170.0	2000:	439.4
● 1991:	189.8	2001:	475.8
● 1992:	213.0	2002:	513.6
● 1993:	224.7		

Average 2003 Price for Scientific Disciplines

- Lee Van Orsdel and Kathleen Born, *Library Journal*, April 15, 2003
- Full text at: <libraryjournal.reviewsnews.com/index/asp>
 - Chemistry \$2,403.06
 - Engineering \$1,359.52
 - Technology \$1,200.22
 - Math/CompSci \$1,151.71
 - Zoology \$1,019.57
 - Botany \$ 900.62
 - Food Science \$ 829.44
 - Agriculture \$ 630.29
 - Physics \$2,357.86
 - Astronomy \$1,357.23
 - Biology \$1,175.68
 - Geology \$1,037.93
 - General Sci \$ 992.52
 - Health Sci \$ 849.62
 - Geography \$ 819.45

Borrow Direct at Yale, 2002-2003

- Borrowing for Yale Patrons
 - Borrowing requests: 10,766
 - Borrowing requests filled: 9,291
 - Fill rate: 86%
- Lending to Patrons of other BD Libraries:
 - Lending requests: 14,745
 - Lending requests filled: 11,927
 - Fill rate: 80%
- All 7 participating libraries:
 - Total Borrow Direct borrowing/lending during October 2002 through September 2003: 87,063

Borrow Direct: Measuring Change

- Response time:
 - Before BD 29 Days (ARL)
 - Borrow Direct 4 Days
- Fill Rate – Lending:
 - Before BD 43%
 - Borrow Direct 85%
- Transaction Cost – Lending:
 - Before BD \$20.56
 - Borrow Direct \$ 7.29
- Transaction Cost – Borrowing:
 - Before BD: \$19.72
 - Borrow Direct: \$ 7.67

Meeting Reader Expectations



David Sipress, in the *New Yorker*, July 3, 2000

URLs In This Talk

- NERL public site:
<<http://www.library.yale.edu/NERLpublic>>
- International Coalition of Library Consortia:
<<http://www.library.yale.edu/consortia>>
- NERL principles for licensing electronic journals:
<<http://www.library.yale.edu/NERLpublic/EJrnlPrinciples.html>>
- Developing Nations Initiatives:
<<http://www.library.yale.edu/~license/develop.shtml>>
- LOCKSS; Lots of Copies Keep Stuff Safe:
<<http://www.lockss.org>>