



Be inspired to work with data: “Innovation in Research Data”

Rory Dunbar & Jessica Workman

Desmond Tutu TB Centre

Paediatrics and Child | Faculty of Medicine and Health Sciences

Overview

- Using research data to inform operations during a research project
 - Monitor project progress
 - Plan and coordinate workload of field teams
 - Retention of study participants

The objectives

- Define community boundaries
- Define smaller zones to allocate teams
- Census
 - How many households
 - Population size
 - Basic data required
 - Gender/Age
 - Make use of local clinic...

Defining the study communities

- The need for accurate/current information
 - Demographics
 - Location of Study Populations (Clinic)
- National Census
 - Sometimes old and outdated
 - Inaccurate
- GIS and Electronic Data Capture (EDC) systems
 - Trial-specific Census
 - More up to date information (current)
 - Monitor fieldwork in community studies



Mini Census

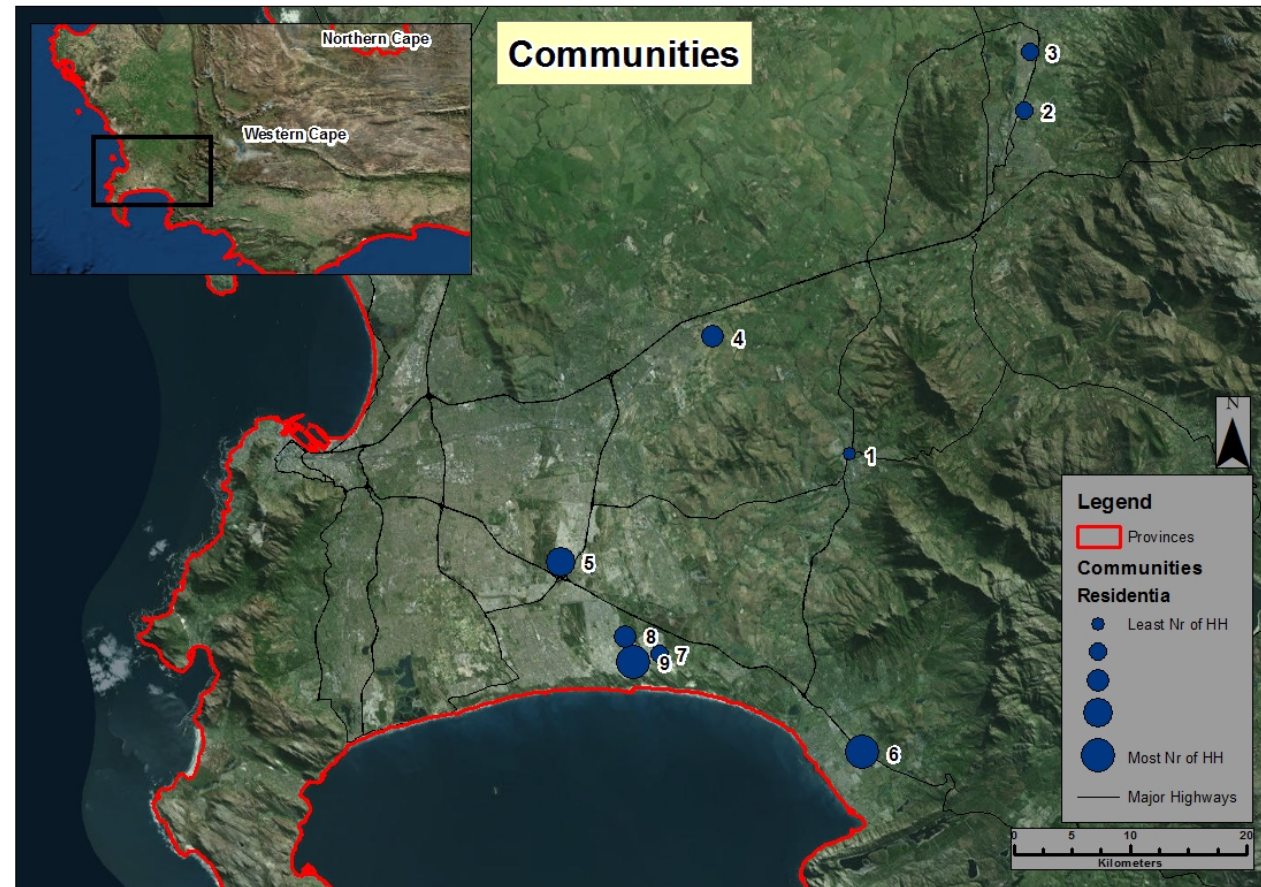
Data collection tools

- Mobile device
- Electronic data collection system
 - Central data storage
- Google Maps



The project setting

- Community randomized trial
- 9 Communities in the Western Cape

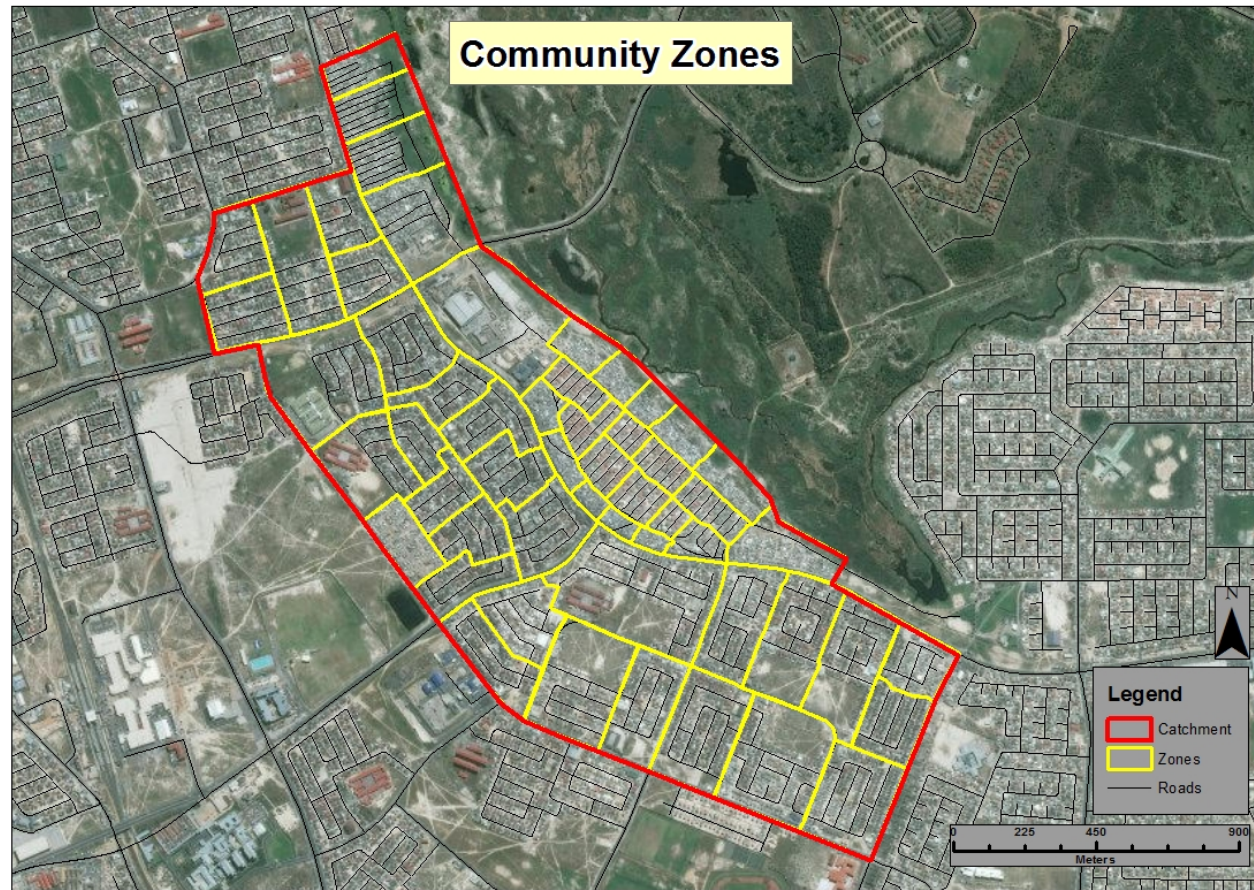


Maps created by Mark Theart

Defining the community border

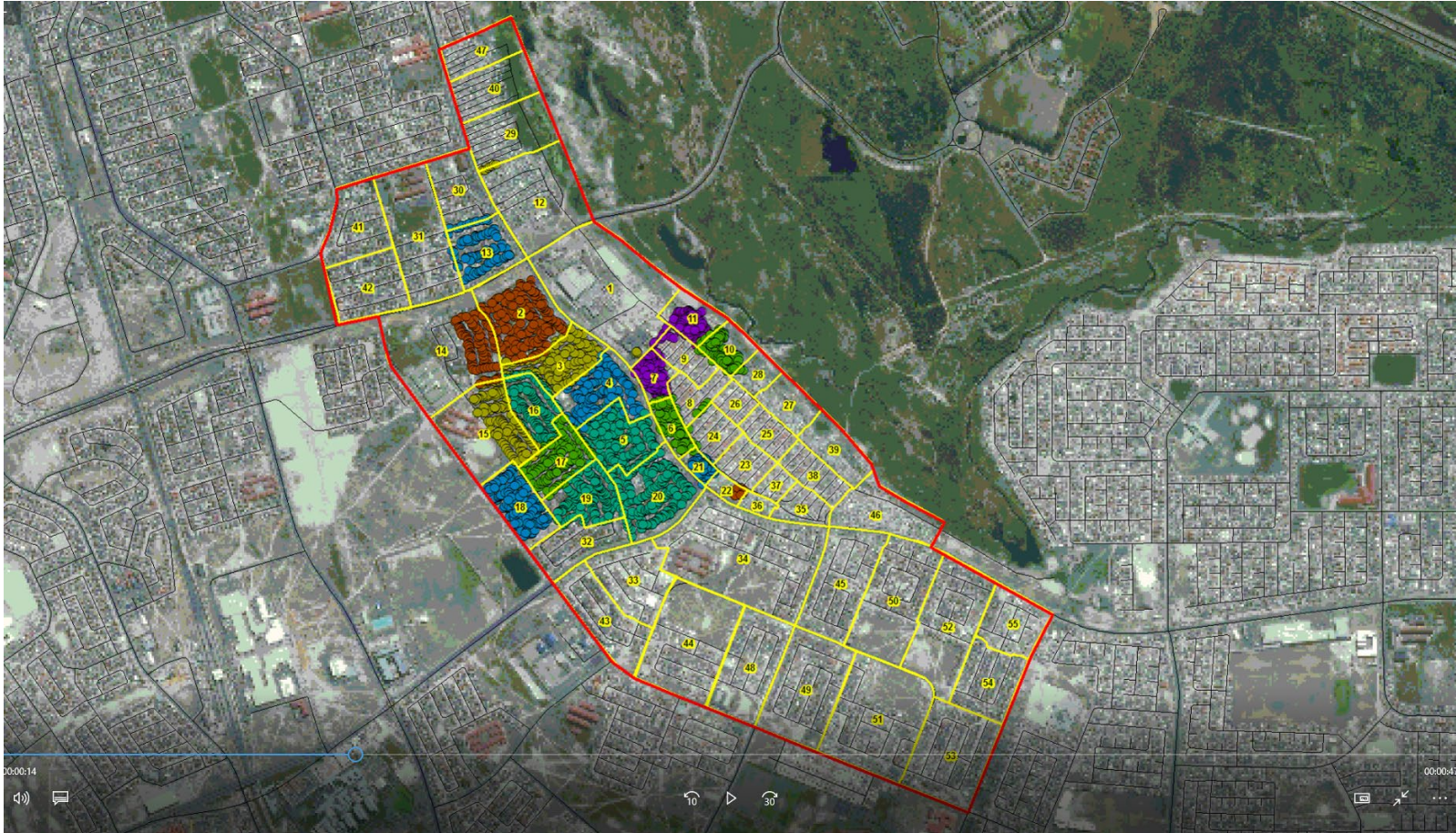


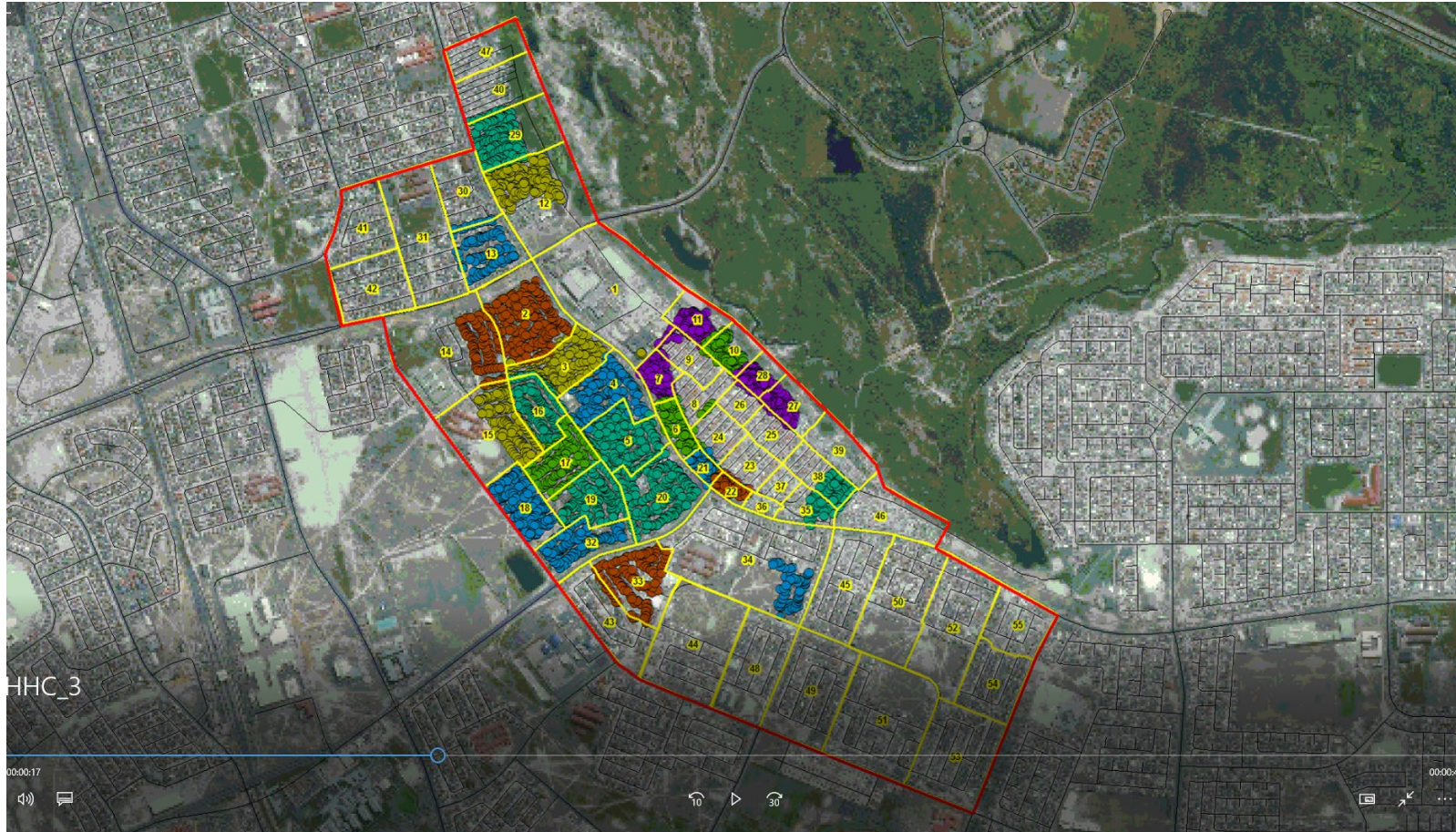
Define working zones

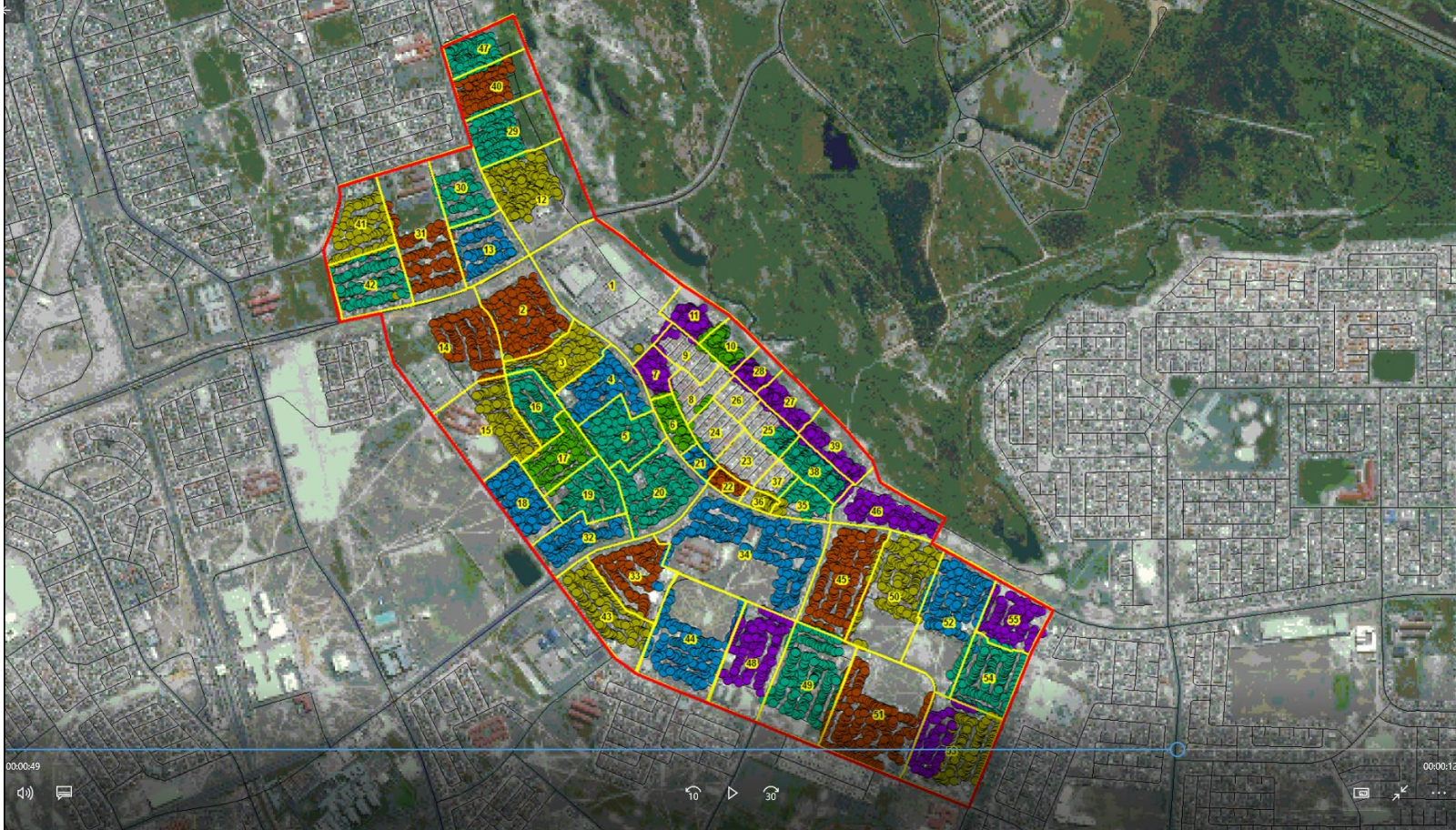


Monitor progress...









Mini Census - Results

- 16 Weeks (9 communities)
 - 74 457 households
- Produced representative sampling frame for the trial
- Demographic database – estimated Population of 312 473



Monitor project progress

Retention of study participants

- Why do we lose participants
 - Withdraw consent
 - Move/Died
 - Community restructuring
 - Natural disasters

Changes in community (2013)



Informal to Formal housing (2016)





Expanding communities

Start of study (2013)



Influx of new households (2016)



Stellenbosch University - REDCap

There are 2 instances of REDCap at SU:

- 'sandbox'/training environment: redcaptest.sun.ac.za
- production/live environment: redcap.sun.ac.za

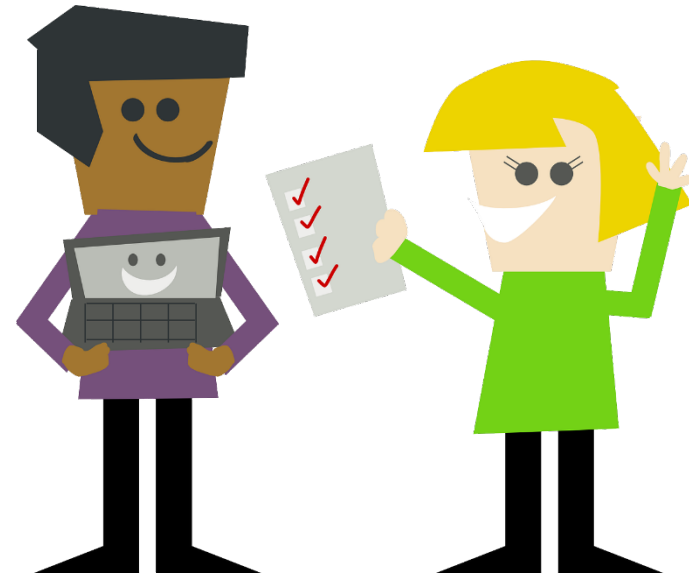


Please feel free to contact redcap@sun.ac.za

Data Innovation in Paediatric Trials

How we're turning ourselves into a data unit of excellence

Solutions Data Can Offer



Problems we face

- Budgets for cutting edge trials are small
 - Workloads are heavy
 - Performance must be excellent
 - Quality of data must be exceptional

Solutions we build

- Leverage data to help people
 - Automate manual processes
 - Triggers and reminders
 - Monitor quality

Our Top 5 Innovations in Research

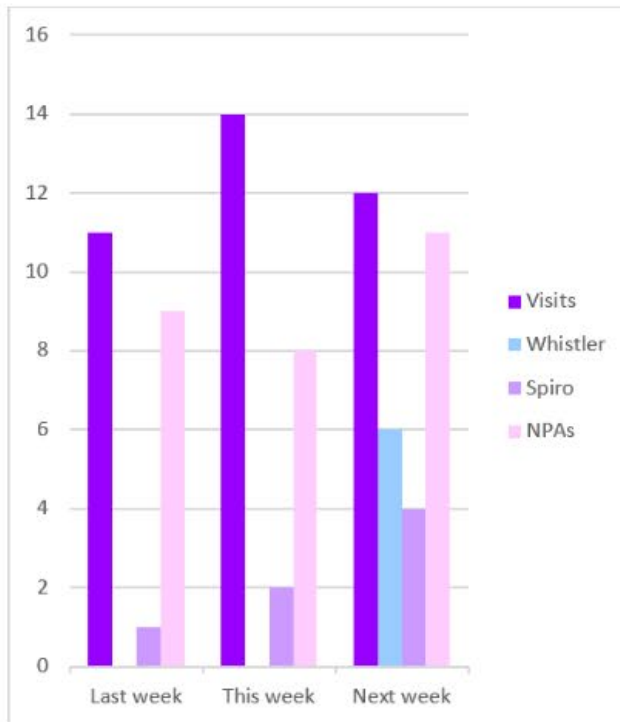
- Automated stats
- Calendar and real-time retention
- Results read by a computer and sent to relevant doctors
- Automated back-ups
- Mobilize

Stats for Team Updates

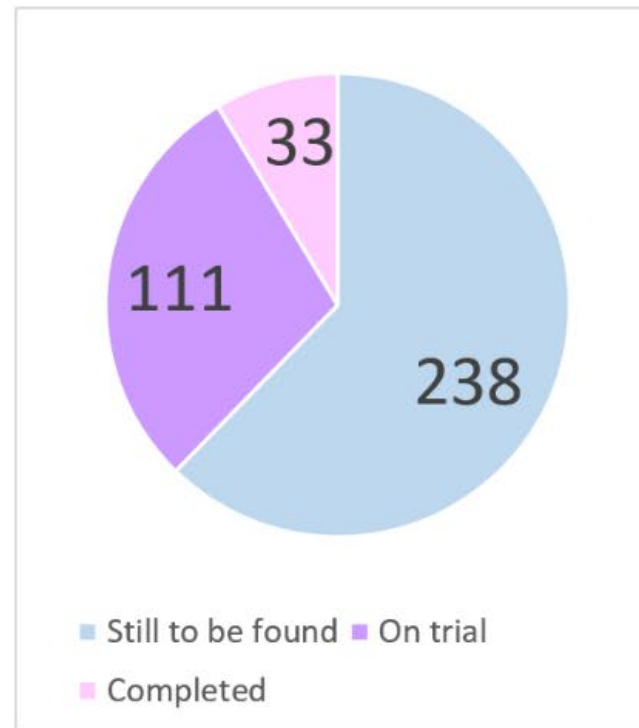


Stats for Team Updates

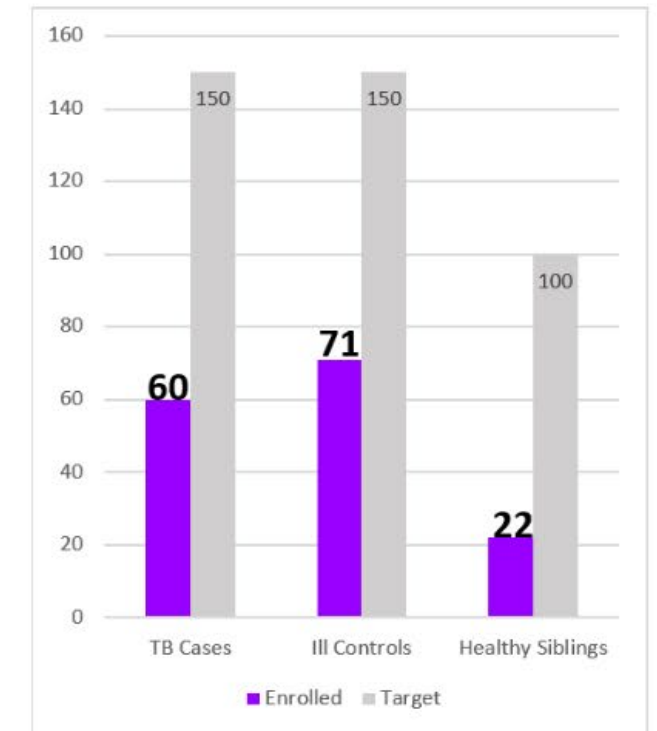
Workload



Cohort Status



Cohort Recruitment



Stats for Team Updates



Calendar and Real Time Retention



Calendar and Real Time Retention

◀ May ▼ 2019 ▶

🖨️ [Print Calendar](#)

Sunday	Monday	Tuesday	Wednesday	Thursday	Friday	Saturday
			+ New 1 🗨️ PUBLIC HOLIDAY	+ New 2 🗨️ Meg on leave	+ New 3	+ New 4
+ New 5	+ New 6 ☆ U_SA0344A (wk48_m4) ✓ U_SA0352D (wk48_m4) ... ☆ U_SA0340X (wk48_m4) ☆ U_SA0351K (wk48_m4) ☆ U_SA0342M (wk48_m4) +8 more	+ New 7 🗨️ USA0374 Unschedule 🗨️ SA0198 for a weight che... 🗨️ SA0276 Clinical Review ☆ T_SA0254E (wk72_m4) ☆ T_SA0255Z (wk72_m4) +5 more	+ New 8	+ New 9	+ New 10	+ New 11
+ New 12	+ New 13 🗨️ SA0323W (SAPTOE) - WI... 🗨️ 340 call and see if coug... 🗨️ 351 coming to TBH for r... 🗨️ SA0326 for Drs review i... 🗨️ U_SA0248R - Post-Disco... +7 more	+ New 14 🗨️ 320 booked for a sweat ... 🗨️ Pls get 374 in for review ☆ T_SA0349Y (wk48_m4) ☆ T_SA0290W (wk60_m6) ☆ T_SA0289E (wk60_m4) +4 more	+ New 15	+ New 16 🗨️ T_SA0288L (wk60_m6) ...	+ New 17 🗨️ Remind 320 about G9 a...	+ New 18
+ New 19	+ New 20 🗨️ Remind Randorp about ... 🗨️ 320 to be admitted in G9	+ New 21 🗨️ #276 Coming for Dr Rev... 🗨️ #252 Coming for Dr Rev... 🗨️ T_SA0217 Clinical Review ☆ T_SA0298C (wk60_m4) ...	+ New 22 🗨️ NO CLINICIANS	+ New 23	+ New 24	+ New 25
+ New 26	+ New 27 🗨️ T_SA0358W (wk48_m4) ☆ U_SA0359R (wk48_m6) ☆ U_SA0363R (wk48_m6) ☆ U_SA0301X (wk60_m4) ☆ U_SA0364L (wk48_m6) +5 more	+ New 28 ☆ T_SA0366Z (wk48_m6) ☆ T_SA0355N (wk48_m4) ☆ T_SA0357B (wk48_m4) ... ☆ T_SA0361B (wk48_m4) ☆ T_SA0293E (wk60_m4) +3 more	+ New 29	+ New 30	+ New 31	

Important Results Send Themselves



Automated Back-ups



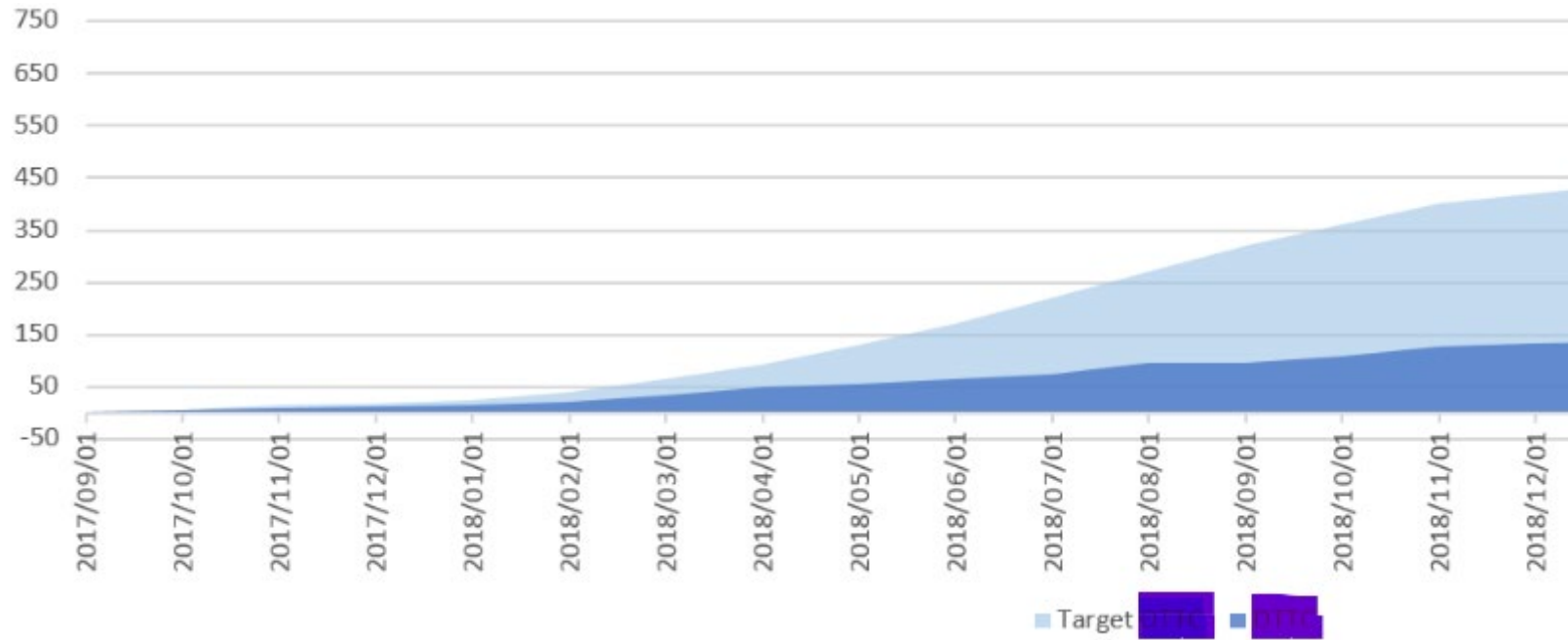
Automated Back-ups



Automated Back-ups



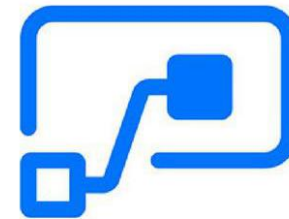
Mobilize



Mobilize



Outlook



Mobilize

Referrals

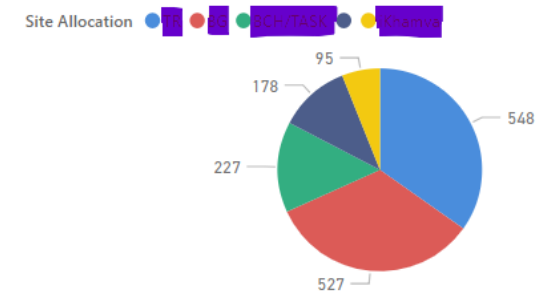
1575

Referrals

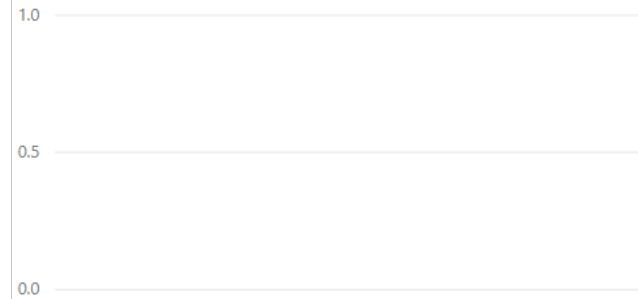
Referrals not passed on to recruiting team

Count of Record ID	Referral_outcome
162	index_duplicate
1374	index_for recruitment
39	index_inappropriate referral
1575	

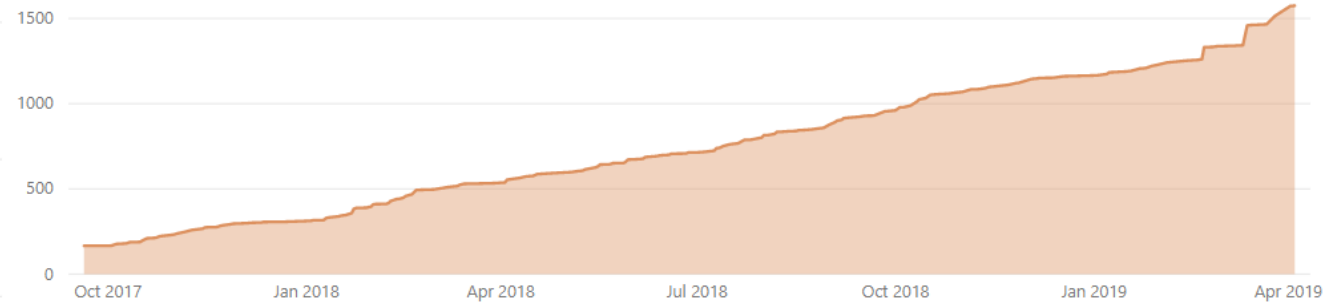
Referrals by Site Allocation



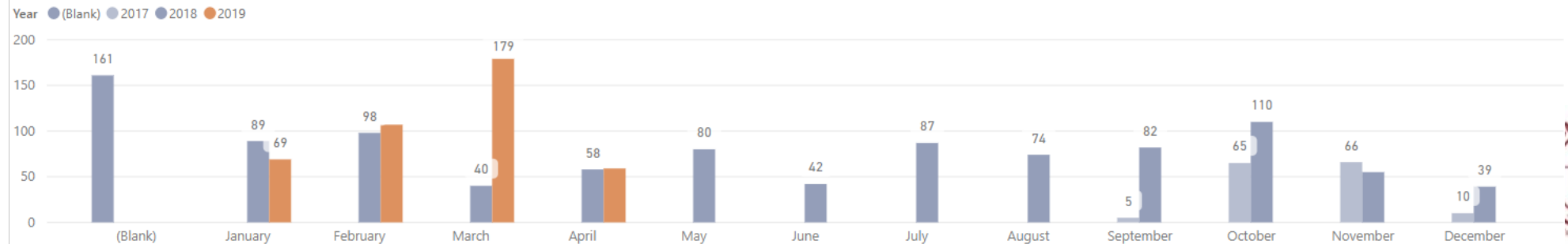
Referral inputs by source of referral



Referrals running total



Referral by Month and Year





THANKS YOU

ENKOSI

DANKIE

Free REDCap Course

<https://www.coursera.org/learn/clinical-data-management?>